

# CHARLES BARCLAY ARCHITECTS

## Kielder Observatory

### LOCATION

Northumberland, UK

### FUNCTION

Astronomical Observatory

### AREA

222 sqm

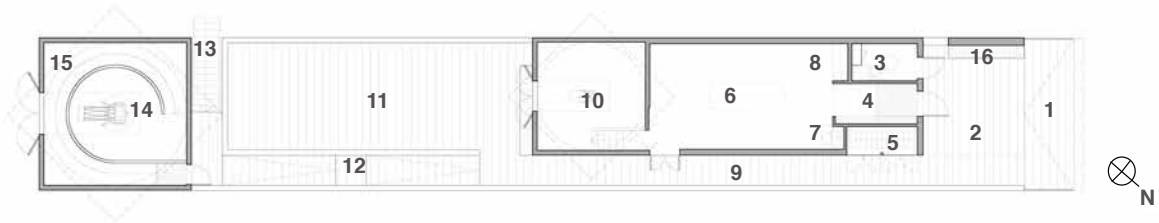
The astronomical observatory, won in competition in 2005, was completed for the Kielder Partnership in May 2008 and has been acclaimed by architectural critics, the astronomical community and the public. The first observatory to use a 'land pier' form and all-timber construction, it houses two permanent telescopes and is designed specifically for amateurs and outreach work. During the day, the observatory serves as a belvedere overlooking Kielder Forest. The observatory is an exemplar sustainable building, entirely self-powered by means of a wind turbine and photo-voltaic panels and features as the 'mothership' for the renowned Kielder star camps. The observatory has received 2009 awards from the RIBA and The Civic Trust and featured in the inaugural World Architecture Festival. For information on opening times see

[www.kielderobservatory.org](http://www.kielderobservatory.org)



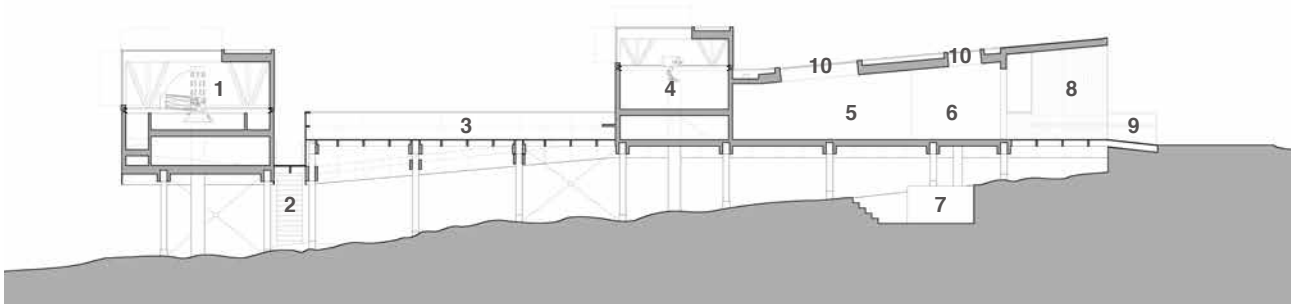
Kielder Observatory and its revolving turrets.

# CHARLES BARCLAY ARCHITECTS



**Floor plan.**

- |                          |                  |                      |
|--------------------------|------------------|----------------------|
| 1. Entry ramp            | 6. Warm room     | 11. Observation deck |
| 2. Covered entrance area | 7. Stove         | 12. Ramp             |
| 3. w/c                   | 8. Kitchenette   | 13. Escape stair     |
| 4. Entrance              | 9. Gangway       | 14. Pulsar turret    |
| 5. Battery Cupboard      | 10. Meade turret | 15. Circular ramp    |
|                          |                  | 16. Bench seat       |



**Section.**

- |                                  |                          |
|----------------------------------|--------------------------|
| 1. Pulsar turret                 | 6. Entry Hall            |
| 2. Galvanised steel escape stair | 7. Composting Vault      |
| 3. Observation deck              | 8. Covered entrance area |
| 4. Meade Turret                  | 9. Concrete ramp         |
| 5. Warm oom                      | 10. Rooflights           |

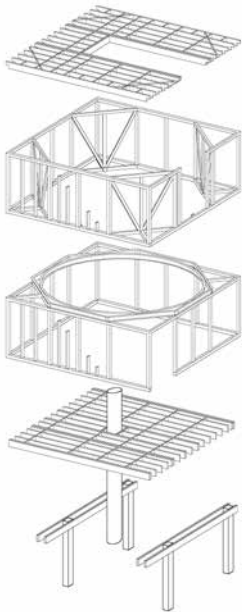


**Pulsar telescope.**



**Warm room.**

# CHARLES BARCLAY ARCHITECTS



Axonometric of pulsar turret.



View from observation deck



View of main entrance.